

V-Switch quad



Quad Multiviewer and KVM Switch

V-Switch quad simultaneously displays four analog or digital computers and video sources on a single screen. In addition, these computers can be controlled with just one keyboard and mouse or touch screen.

DVI & VGA, HDTV, PS/2 & USB

V-Switch quad can process analog and digital video signals via DVI-I ports as both inputs and outputs. Various video modes up to 1920x1200, including HDTV resolutions are supported. Additionally, any combination of input and output resolutions can be used. V-Switch quad also permits configuration of the EDIDs at the input ports. Computers with PS/2 and USB keyboard and mouse can be connected.

Operation

There are six different ways of switching between video channels and display modes: front panel buttons, configurable keyboard shortcuts (hotkeys), mouse (hotmouse function), via an external device configuration program, serial control devices via DCP-XML protocol, and touch screens.

Serial control, remote access, and touch screen compatibility

V-Switch quad supports external serial control via the DCP-XML protocol. In this way, it can be integrated into larger control and automation systems.

Combined with KVM over IP extenders, V-Switch quad enables location-independent remote control of the attached KVM devices. V-Switch quad is compatible with many touch screen models. While showing all sources simultaneously on the screen, they can be controlled with the touch of a finger.

Wide range of applications

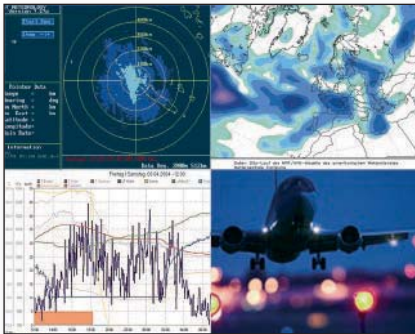
Areas of application include monitoring systems, process control centers, server rooms, medical industries, broadcasting, production and automation, aircraft and vehicles. In combination with projectors, V-Switch quad is also used in presentations and conference rooms.



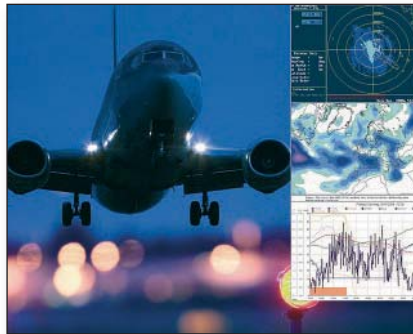
scanmagnetics.com



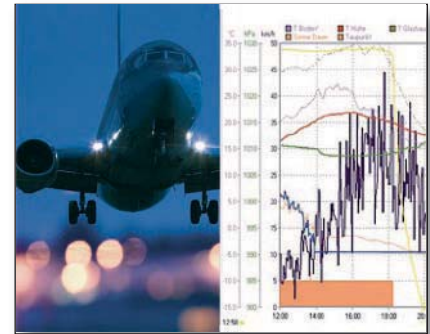
V-Switch quad



Quad mode



PiP mode



Dual mode

Quad mode

In Quad mode the screen is divided into four equal-sized areas. Each field displays the entire screen content of a video source or computer.

PiP mode

When the PiP (Picture in Picture) function is activated, up to all three other video sources are displayed on the right-hand side of the full-screen image as thumbnails, allowing them to be monitored simultaneously. Size, position and selection of these thumbnails are customizable.

Dual mode

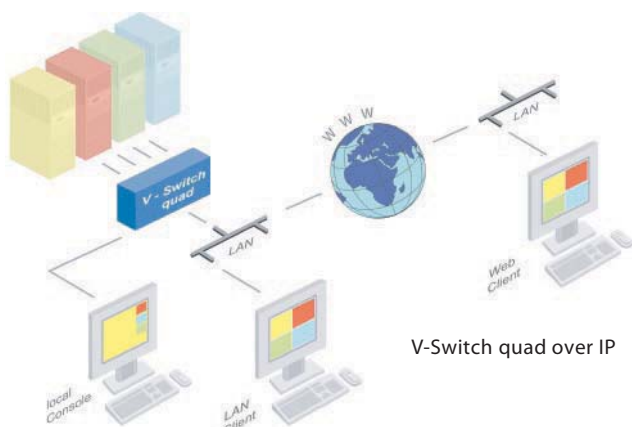
In Dual mode the left halves of the fullscreen images from two video sources are displayed side by side at full size.

Fullscreen mode

In Fullscreen mode, one of the four video sources is shown at full screen size and maximum resolution.

Technical data

Casing:	stainless steel, powder coated, dimensions: 436 x 234 x 44 mm (WxDxH), color: black (RAL 9005)
Computer ports:	4 x DVI-I (analog and digital), 4 x PS/2, 4 x USB
Console ports:	1 x DVI-I, 2 x USB for keyboard and mouse
Input and output resolution:	up to 1600 x 1200 @ 60 (VGA) up to 1920 x 1200 @ 60 (DVI) reduced blanking also supported HDTV modes supported up to 1920 x 1080 @ 60 Hz, progressive (non-interlaced)
Touch screen compatibility	various models supported: details available upon request
EDID adjustment	at each input port customizable
Supported keyboard layouts:	German, English, French, Italian, Spanish, Japanese
Power supply:	internal AC adapter, 100-240V, 50/60 Hz
Power consumption:	max. 35 watts
Operating temperature:	5° to 45° C
Storage temperature:	- 10° to 60° C
Relative humidity:	5 to 85% non-condensing
Weight:	2,9 kg
Certificates:	CE, FCC, RoHS compliant



V-Switch quad over IP

Ordering information

VSW-QUAD	V-Switch quad, desktop, 19" rack mount kit
optional:	
V-IP	V-IP (KVM over IP extender)

V-Match



Eye-Catching Video Walls

V-Match is a modular video wall controller system. In addition to standard video wall layouts, it also allows individually shaped video wall designs. On a V-Match display wall, videos can be shown, switched, mixed, and zoomed. V-Match supports both digital and analog input and output in a wide variety of resolutions and formats.

Flexible and adaptable hardware

As a modular system, V-Match is easily extensible. Each V-Match unit controls two displays. The number of displays in a video wall can be increased at any time by connecting additional V-Match units. The hardware features two independent input ports for two different video sources. For more video sources, a video switch or a matrix can be used. As a pure hardware solution, V-Match offers the advantages of easy, fast setup and great stability. No software installation is required.

Video effects

With V-Match, users can create video effects such as switching, zooming, and mixing video sources on the display wall. Even during an event, such video effects can be configured and switched live. They can also be pre-configured and saved as presets. Presets can then be switched manually. A sequence of presets can be used to define a time line to run automatically in standalone video wall applications.

Distortion-free display

When enlarging a video signal across several screens, V-Match uses interpolation filters to optimize video quality. Additionally gaps between displays are correctly compensated for, preventing jumps in the output image and providing a natural, distortion-free viewing experience. Displays can be positioned and combined with great flexibility to create a video wall design.

VGA, DVI & HDTV in real time

V-Match supports a great number of video modes, including HDTV resolutions, as both input and output. Analog as well as digital signals are accepted and output at full frame rates, permitting display of animated content or movies in 100% real time.

Comfortable operation

V-Match can be controlled with the front panel buttons of the V-Match main unit. Optionally, the V-Match Control software can be installed on an external PC to operate the system via serial connection. In combination with an IP extender, a V-Match video wall can be configured from any remote location.

Wide range of applications

V-Match has a wide range of possible applications, including 24/7 process control centers, digital signage, TV studios, stages, clubs, and presentations at fairs and exhibitions

scanmagnetics.com



V-Match



1 video source - full image



1 video source - zoom in



2 video sources & PiP

Exclusive features:

- **Hardware:** Great system stability, no external software required, no booting, high compatibility - plug and play.
- **Standalone unit:** Great compatibility with media players such as DVD players, computers, media servers as well as with any type of display.
- **Real time video:** Display of animated content or movies in 100% real time possible.
- **More than one video source:** 2 different video sources can directly be connected to the hardware. For more video sources a video switch or a matrix can be used.
- **Great compatibility with displays** such as projectors, monitors, LED-panels, TVs, and rear-projection cubes. Any gab size can be compensated for guaranteeing a natural and distortion-free viewing experience.
- **Any combination of different displays possible:** A video wall can be made of small and large screens with different frame sizes. Displays can be analog and digital and have different video formats, such as 4:3 or 16:9.
- **Eye-catcher:** Exclusive video wall designs can be shaped combining different types of displays in one setup.
- **Modular system** adaptable to the size of a video wall. Each V-Match unit supports up to two displays.
- **Customizable video effects:** Presets can be configured and switched live during events. They can also be pre-configured, saved, and added to a time line for automatic switching.
- **Zoom function:** Any part of the full image of a video signal can be selected. The zoomed part then can be shown enlarged across multiple displays.
- **PiP** (Picture in Picture) function.
- **Comfortable operation:** Presets can be operated via front panel buttons or external control software. A time line can also be edited and customized for automatic switching in standalone video wall applications.

Ordering information:

VMT-MN	V-Match, main unit, desktop, black (RAL 9005) , 19" rack mount kit, V-Match Control program (optional configuration software) on a CD
VMT-EX	V-Match, extension unit, desktop, black (RAL 9005) , 19" rack mount kit

Technical data:

Casing:	stainless steel, powder coated dimensions: 436 x 234 x 44 mm (WxDxH) color: black (RAL 9005)
Interfaces:	per display: input: 2 x DVI-I (analog and digital), (4 per unit) output: 1 x DVI-I (analog and digital), (2 per unit) optional: HDMI – DVI cable (no audio, no HDCP)
Input and output resolutions:	up to 1600 x 1200 @ 60 Hz (VGA) up to 1920 x 1200 @ 60 Hz (DVI), reduced blanking also supported HDTV-Modes supported up to 1920 x 1080 @ 60 Hz, progressive
Power supply:	internal AC adapter, 90-264V, 50/60 Hz
Power consumption:	max. 45 watts
Operating temperature:	5° to 45° C
Storage temperature:	- 10° to 60° C
Relative humidity:	5 to 85% non-condensing
Weight:	3,2 kg
Certificates:	CE, RoHS compliant



scanmagnetics.com